

Cobra Combi

Gas-powered convenience in a drill/breaker



Atlas Copco

Freedom of movement, zero set-up time

With no compressors, hoses or cables to set up, gas-powered breakers are ideal for smaller jobs. They are indispensable for tasks that involve moving along a line, from position to position, or for working in remote, inaccessible locations. And for many years, they have been a standard piece of equipment for emergency teams.

The Cobra Combi is not only a self-contained breaker, it's a powerful drill as well. It can sink holes to the depth of 6.5 feet, and drill up to 12 inches per minute in solid granite.

A multi-purpose tool

With a wide range of tools, you can use both the Cobra Combi and Cobra Standard for everything from cutting and breaking to driving and compacting. The Combi offers the extra feature of drilling capability. Whether you need to just break a small patch of concrete, or split a rock, you can get the job finished with a gasoline-powered machine in the same amount of time it takes to set up a compressor and hoses.

You can use the multi-purpose Cobra Combi to:

- break concrete
- cut asphalt
- dig
- drive posts and fences
- drive rods and spikes
- tamp and compact soil
- tamp ballast/ties
- drill
- split rocks



Breaking concrete



Cutting asphalt



Drilling



Digging



Splitting rocks

Cleaner emissions, lower vibrations, less noise

The Cobra Combi is a modern tool that meets emerging regulations. Equipped with a catalytic converter and new carburetor, the machine now meets tough US emission regulations EPA1. In addition, a new silencer has reduced the noise level from 114 dB to 108 dB, thereby fulfilling the European Noise Emission Directive.



Easy to start
With a new choke control, new carburetor and user-friendly instructions, the Cobra Combi is easy to start.



Vibration-dampening handles
New vibration-dampening handles have reduced vibration levels from 8 to less than 4.8 m/s².



The optional guide roller makes it easier to pull downwards to start the machine when it is placed higher up.



Easy to transport
The Combi weighs just 56 lbs. and comes with its own carrying case which fits easily into the trunk of your car.

Technical data

Model	Part Number	Wt	L	D	Width over handles	Tool shank	Sound level	Vibration level	Drilling speed in granite	Max drilling depth
		lb	in	in	in	in	(Acc. to ISO 3744)	(Acc. to ISO 8662)	1 21/64 in drill	feet
Cobra Combi	8318 0800 00	56.0	28.81	11.06	23.03	7/8" - 4 1/4"	108 dB	4.4 m/s ²	11.8 in/min	6.5

ENGINE

Type	Power	Cooling system	Starter system	Recommended fuel	Oil type	Oil mix	Fuel capacity	Fuel consumption	Impact rate
185 cc 1-cylinder, 2-stroke	1kW	Forced air	Recoil starter	Unleaded	Atlas Copco two-stroke oil or similar	2% 1:50	0.31 US Gal	0.36 US Gal/hr	2600 BPM

A tool for every job

At Atlas Copco, we maintain a comprehensive range of chisels so that you can select the right tool for the job.

Atlas Copco chisels are among the hardest wearing on the market. A controlled heat treatment process imparts both strength and high wear resistance

to deep surface layers while maintaining a tough shock resistant central core to resist breakage.

The striking face is end-milled. This results in better contact between the piston and the tool, improved transfer of energy, as well as less vibration and wear on both hammer and chisel.

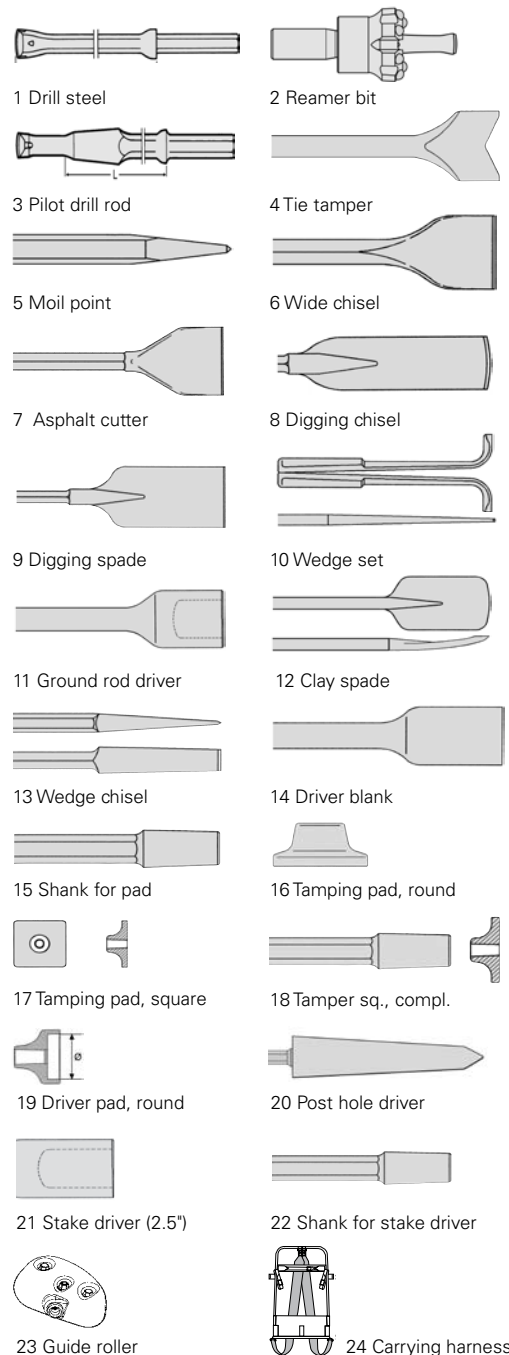
Tools

	Tool type	Working length		Tip width		Weight		Part number
		mm	(in.)	mm	(in.)	kg	(lb)	
	Shank H 22x108 mm (H 7/8 x 4 1/4 in)							
1	Drill steel	1200	(47)	32	(1 1/4)	4.3	(9.2)	714-1232
	Drill steel	800	(31)	33	(1 5/16)	3.1	(6.5)	714-0833
	Drill steel	400	(16)	34	(1 3/8)	1.8	(4.1)	714-0434
2	Reamer bit			76	(3)	1.2	(2.6)	175-5076
3	Pilot drill rod	800	(31)	26	(1)	3.3	(7.3)	575-3108
4	Tie tamper	390	(15 1/2)	90	(3 1/2)	3.0	(6.5)	3083 3237 00
	Tie tamper	460	(18)	90	(3 1/2)	3.2	(7.0)	9245 2823 30
	Tie tamper	550	(22)	90	(3 1/2)	3.9	(8.5)	9245 2822 40
5	Moil point	350	(14)			1.4	(3.1)	3083 3228 00
	Moil point	480	(19)			2.0	(4.5)	3083 3229 00
6	Wide chisel	240	(9 1/2)	45	(1 3/4)	1.2	(2.7)	3083 3231 00
	Wide chisel	340	(13 1/2)	45	(1 3/4)	1.4	(3.1)	3083 3230 00
	Wide chisel	380	(15)	75	(3)	2.6	(5.7)	3083 3232 00
	Wide chisel	450	(18)	45	(1 3/4)	2.0	(4.5)	3083 4071 00
7	Asphalt cutter	350	(14)	125	(5)	3.0	(6.5)	9245 2812 90
8	Digging chisel	280	(11)	75	(3)	2.7	(6.0)	3083 3233 00
9	Digging spade	330	(13)	120	(4 3/4)	3.6	(8.0)	3083 3234 00
10	Wedge set 29 mm					1.5	(3.3)	9245 2813 81
	Wedge set 34 mm					2.1	(4.6)	9245 2813 51
11	Ground rod driver	195	(7 3/4)	42	(1 11/16)	1.2	(2.6)	3083 3241 00
12	Clay spade	350	(14)	125	(5)	3.4	(7.5)	3083 3235 00
13	Wedge chisel	380	(15)	35	(1 3/8)	2.8	(6.2)	3083 3236 00
14	Driver blank	195	(7 3/4)	55	(2 1/8)	2.5	(5.5)	9245 2822 80
15	Shank for pad	185	(7 1/4)			1.3	(2.9)	3083 3238 00
16	Tamping pad, round			175	(7)	7.5	(16.5)	3083 3252 10
17	Tamping pad, square			175	(7)	5.7	(12.5)	3083 3239 00
18	Tamper sq., compl.	190	(7 1/2)	175	(7)	7.0	(15.5)	3083 3240 00
19	Driver pad, round			100	(4)	2.5	(5.5)	9245 2817 90
20	Post hole driver	460	(18)	Ø 40	Ø 1 1/2	4.2	(9.2)	9245 2822 31
21	Stake driver (2.5")			64	2 1/2 ID	5.0	11.0	9245 9800 50
22	Shank for 2.5" stake driver	228	9			2.1	4.6	9245 9912 41

Accessories

	Description	Part Number
23	Guide roller	9234 0009 38
24	Carrying harness	9238 2814 10

Use only authorized parts. Any damage or malfunction caused by the use of unauthorized parts is not covered by Warranty or Product Liability.



Atlas Copco Construction Tools Inc.
 37 Capital Drive, West Springfield MA 01089
 Tel (800) 760-4049 Fax (800) 952-7975
www.atlascopco.com/cto